

10 Elements of High Quality Digital Learning



DIGITAL LEARNING NOW!

1. Student Eligibility

All students are digital learners.



DIGITAL LEARNING NOW!

2. Student Access

All students have access to high quality digital content and online courses.



3. Personalized Learning

All students can customize their education using digital content through an approved provider.



4. Advancement

Students progress based on demonstrated competency.



5. Content

Digital content, instructional materials, and online and blended learning courses are high quality.



6. Instruction

Digital instruction and online teachers are high quality.



7. Providers

All students have access to multiple high quality providers.



8. Assessment and Accountability

Student learning is the metric for evaluating the quality of content and instruction.



9. Funding

Funding creates incentives for performance, options and innovation.



10. Delivery

Infrastructure supports digital learning.



Task Force on Technology

Boise, Idaho

June 14, 2011

Harnessing the Power of Technology for a 21st Century Education

**Bob Wise, President
Alliance for Excellent Education**



Definition of blended learning

Any time a student learns in part in a supervised brick-and-mortar place away from home

and

At least in part through online delivery, with some element of student control over time, place, path and/or pace



**Blended
learning**

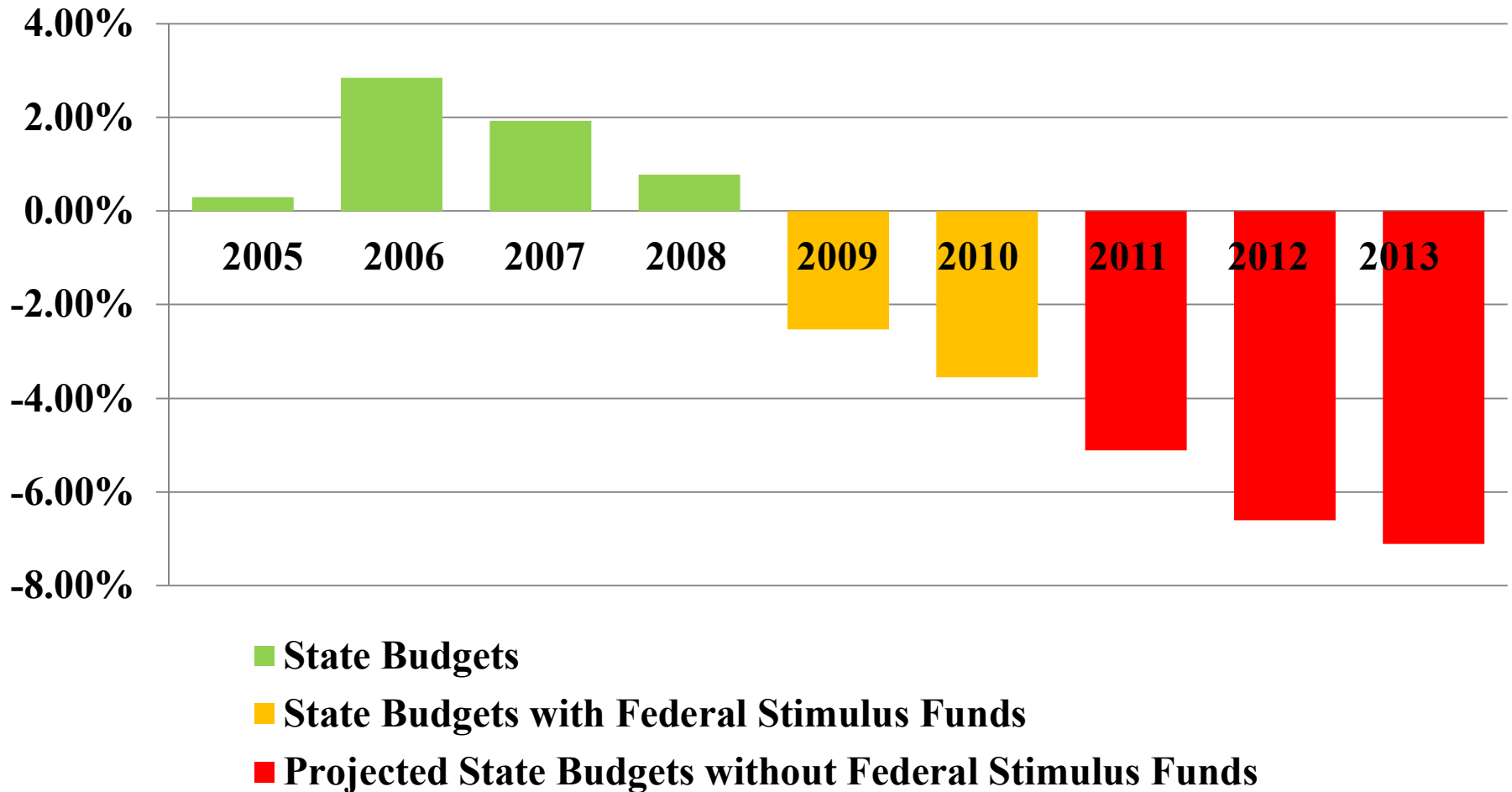
Challenges in America's K-12 Education System

Three Looming Crises:

1. Declining State Fiscal Revenues
2. Mounting Teacher Shortages
3. Increased Global Demands for Skilled Workers



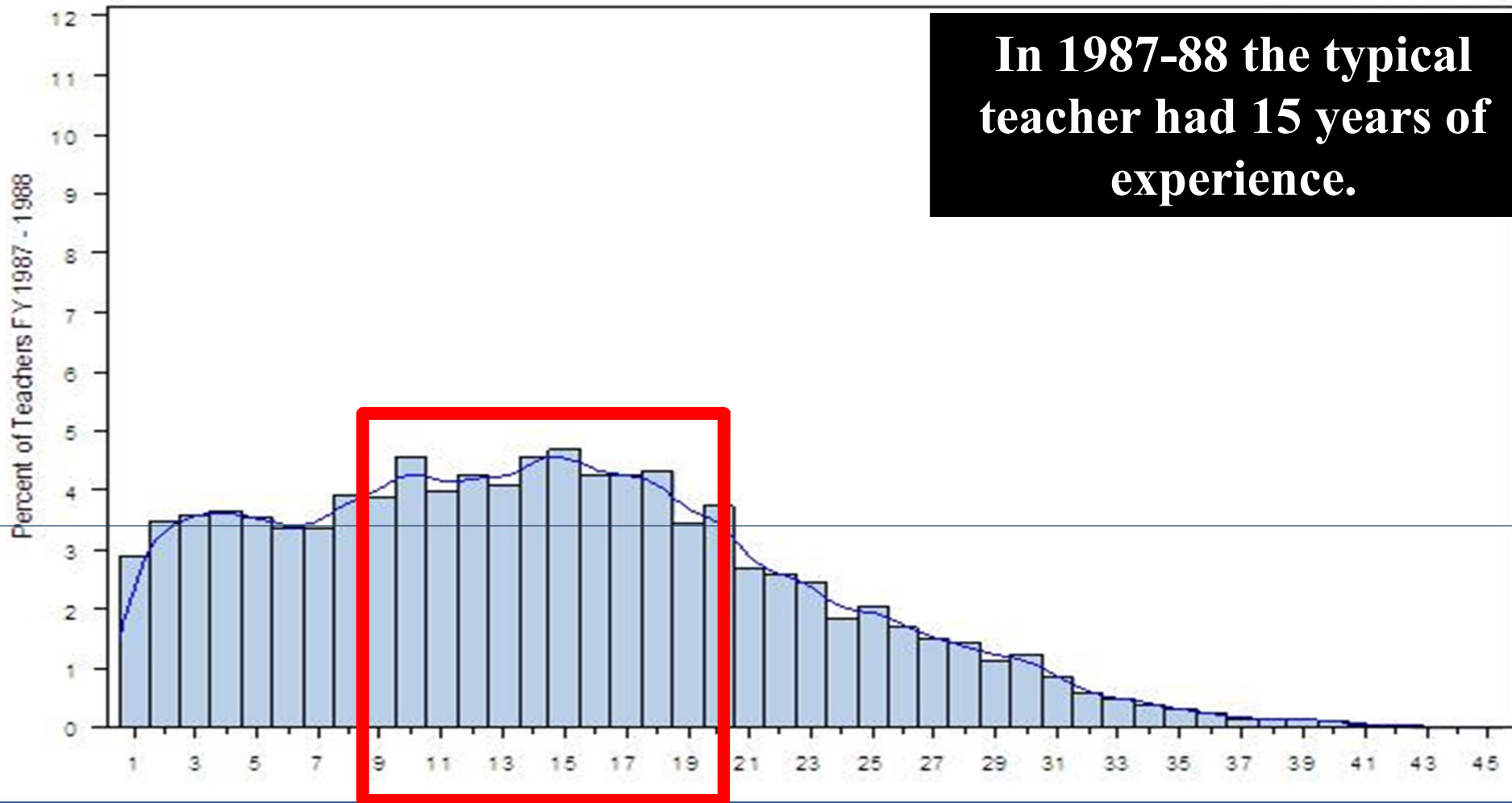
Challenge 1. Declining State Fiscal Revenues...



Challenge 2: Mounting Teacher Shortages...

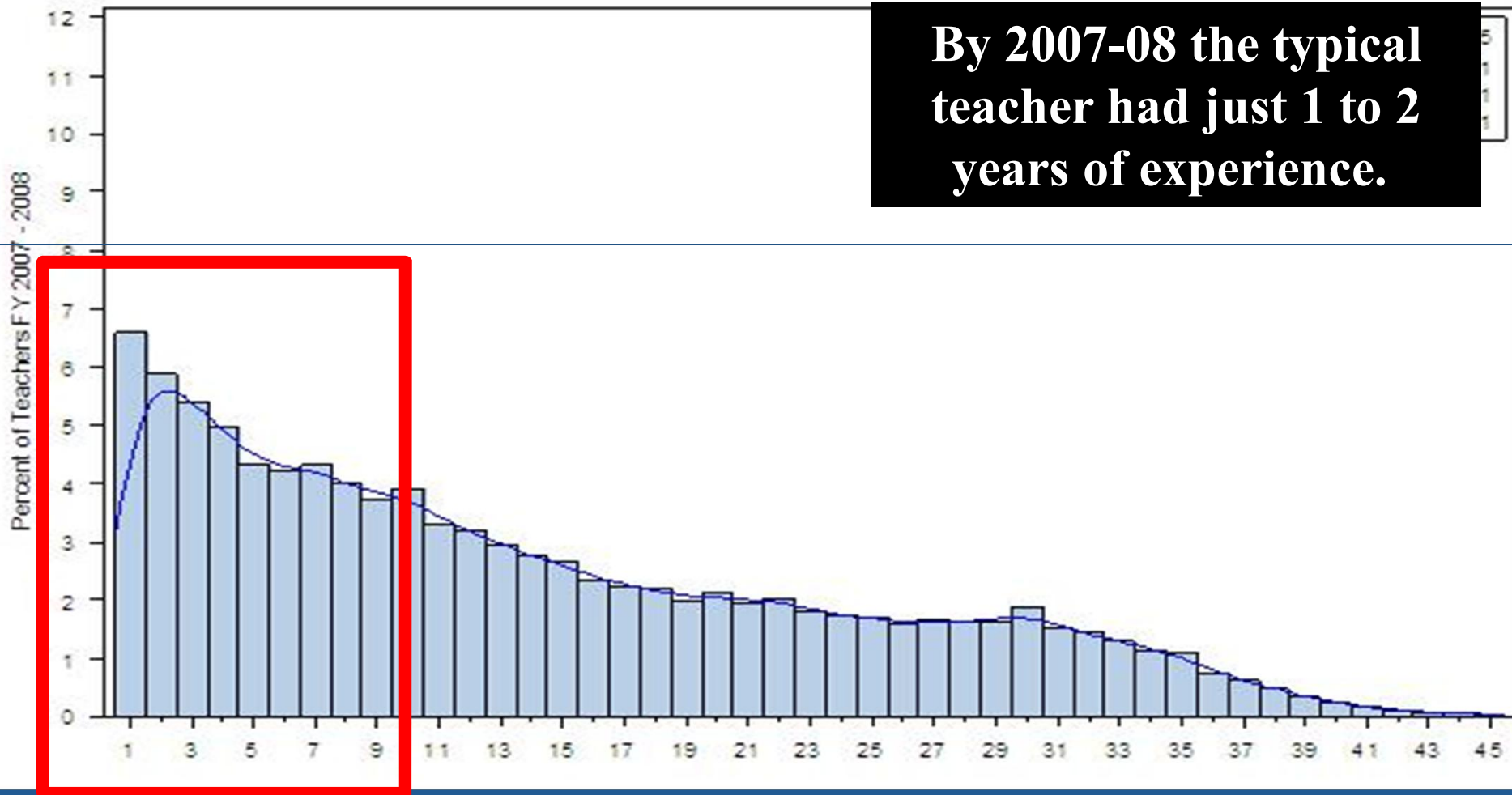
There is a significant drop in experience in the classroom.

In 1987-88 the typical teacher had 15 years of experience.



Challenge 2: Mounting Teacher Shortages...

There is a significant drop in experience in the classroom.



By 2007-08 the typical teacher had just 1 to 2 years of experience.



...and Finding the Right Teachers



440 high schools

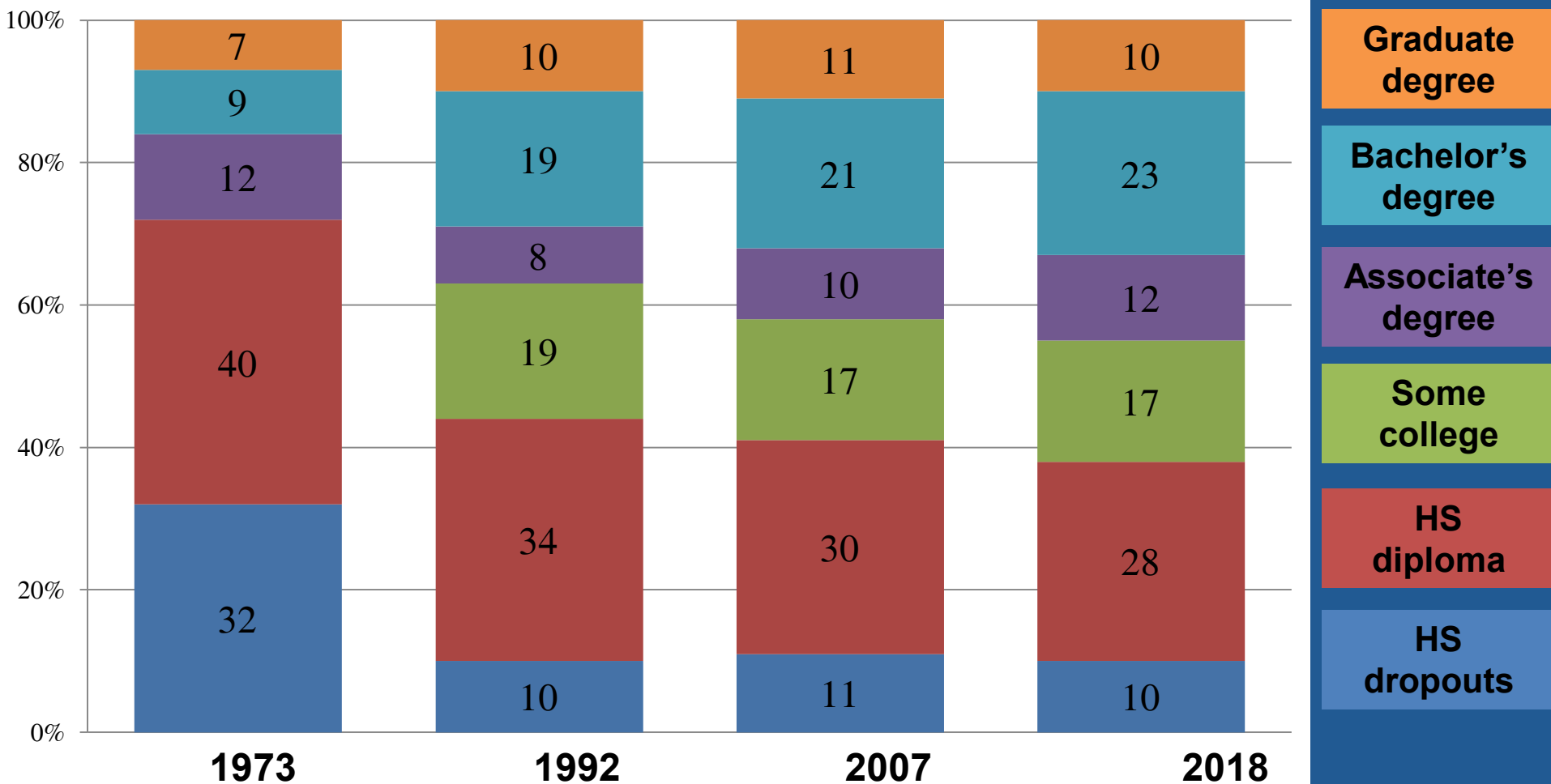


88 qualified
physics teachers



Challenge 3: Growing Demand For An Increasingly Educated Workforce

Workforce job requirements, by education level



Then and Now

Then



**Early Smart Phone:
Kyocera QCP6035 (2000)**

Now



10 Elements of High Quality Digital Learning

Guiding Principles:

- Aspirational
- Comprehensive
- State-focused
- Measurable
- Long-term



Opportunity...Provide Students With Access to Quality Learning



Improve access to courses that prepare students for college

Personalize instruction and make it more relevant



Opportunity...Improve How We Recruit, Train, Retain Teachers



Humboldt High School Humboldt, Iowa

9-12 Students = 409

Teachers = 27

Classification: Rural fringe

Pickens High School Randolph County, West Virginia

K-12 Population = 48

Teachers = 6

Classification: Rural remote



The Choice:

Be boldly innovative

Or badly irrelevant



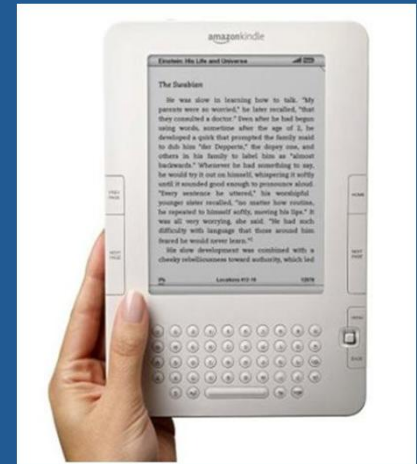
Governor Bob Wise Alliance for Excellent Education

www.all4ed.org



Digital Learning Now! Future Efforts:

The Goal is Transformational Change:



The Economic Benefits of the Reducing Dropout Rate in Idaho

If just half of these dropouts had graduated, the 2,900 “new graduates” would make the following contributions to their local economy:

\$24 million in increased annual earnings



200 new jobs and increase in GRP of **\$33 million**



\$59 million in increased home sales and **\$3.2 million** in car sales



\$19 million in increased spending and **\$5.8 million** in investment



\$2.4 million in increased state and local tax revenue



Increased human capital – **48%** continuing past high school



Source: Alliance for Excellent Education analysis of data from Economic Modeling Specialists, Inc. with generous support from State Farm®



The Economic Benefits of the Reducing Dropout Rate in the Boise City-Nampa Metro Areas

If just half of these dropouts had graduated, the 1,300 “new graduates” would make the following contributions to their local economy:

\$15 million in increased annual earnings



150 new jobs and increase in GRP of **\$20 million**



\$35 million in increased home sales and **\$1 million** in car sales



\$11 million in increased spending and **\$3.5 million** in investment



\$1.5 million in increased state and local tax revenue



Increased human capital – **55%** continuing past high school



Source: Alliance for Excellent Education analysis of data from Economic Modeling Specialists, Inc. with generous support from State Farm®

